

ONCOLOGY CARE NURSE-LED SERVICE

Dr Lavina Bharwani: lavina_bharwani@ttsh.com.sg
Sr Michelle Poon: michelle_ym_poon@ttsh.com.sg
Sr Christine Wong: ling_tze_wong@ttsh.com.sg
Ms Diana Chia: diana_yy_chia@ttsh.com.sg



Tan Tock Seng
HOSPITAL

Problem Statement

Patients receiving curative treatment for **Head & Neck Cancer (HNC)** often encounter **treatment-related toxicities** that require close monitoring and early interventions

Example of treatment-related toxicity symptoms:



Lack of appetite



Nausea & Vomiting



Loss of weight



Depression

Project Aim

To improve adherence to medication and treatment compliance by providing timely interventions for toxicities management and delivering effective psychosocial support to specific group of HNC patients (newly diagnosed, frail elderly with multiple comorbidities, and limited social support).

Lessons Learnt

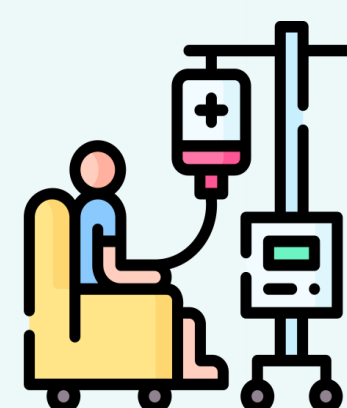
1. We learnt from this service that identifying and addressing patients' unmet needs such as caregiving limitations, financial and emotional burdens, is important in providing effective support throughout their cancer journey.
2. As the team endeavours to validate the positive outcomes of this service, we learnt that proactive data collection is essential to help us comprehend the service's effectiveness and for future expansion planning to patients with other tumour types.

Potential Solutions



Oncology Care Nurse-Led Clinic

- Pre-chemotherapy counselling to allay patients' anxieties
- Advance Care Planning discussions for palliative patients



Chairside Chemotherapy

Review

During

- Identifying unmet needs
- Assessing treatment toxicities
- Addressing medication gaps



Tele-Reviews for Patient Well-Being

- Ensuring adherence to medication compliance
- Reinforcing post-chemotherapy advice and the important of diet and fluid intake
- Facilitating earlier reviews by doctors when required

Outcomes & Impacts

1. HNC patients who received care through this Oncology Care Nurse-Led service felt assured in the level of care they received, as reflected in their feedback :



" Thankful that TTSH provides such a close-knitted support to cancer patients. An impactful care and concern was given." Mr Ong



" This is an extreme journey I've ever had, and surprisingly there's wonderful support during this hardship. I have made the right decision to get my treatment at TTSH." Mr Low

2. With frequent monitoring, patients with symptoms are advised to seek early interventions to prevent complications. Patients' medication and treatment compliance is also improved.
3. This service has the potential to expand and serve patients with other tumour types.